

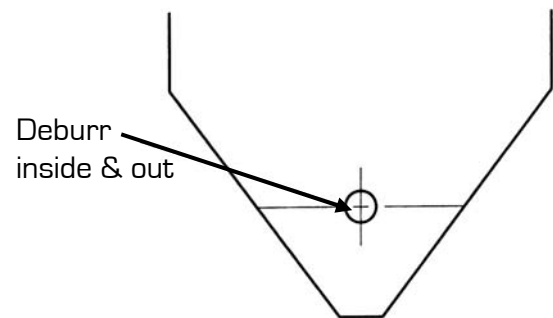
# SILO FLUIDIZER INSTALLATION INSTRUCTIONS



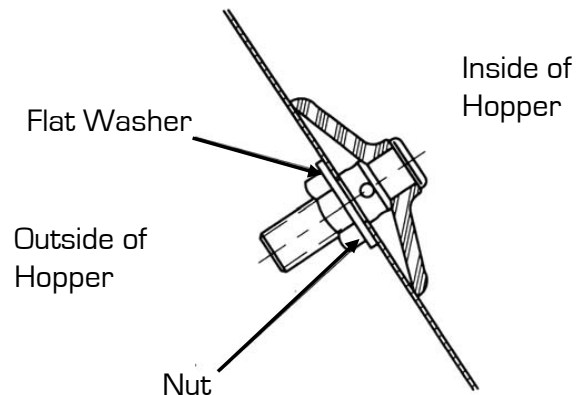
1. Drill appropriate size hole (see table) in silo wall.

Fluidizer	Hole Size - Diameter
43XX	$\frac{7}{8}$ " (22mm)
44XX	$1 \frac{1}{16}$ " (27mm)
45XX	$1 \frac{3}{8}$ " (35mm)
48XX	$\frac{1}{2}$ " (13mm)

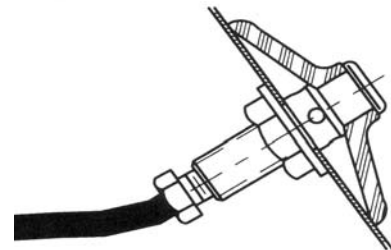
2. Deburr inside and outside of hole. If not deburred, damage to O-ring will occur. Make sure the area where the Fluidizer will be mounted is free of debris or defects (dents, caked material, weld seams, etc).



3. From the inside of the silo, have one person insert disk and stem assembly into the hole.
4. From the outside of the silo, have a second person put the flat washer and nut onto the stem.
5. Torque nut to approximately 25 ft. lbs (35 N m). 20 ft. lbs (27 N m) for the 48XX series.



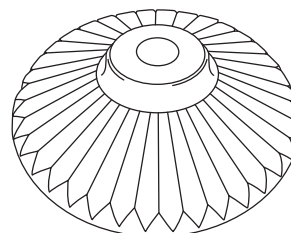
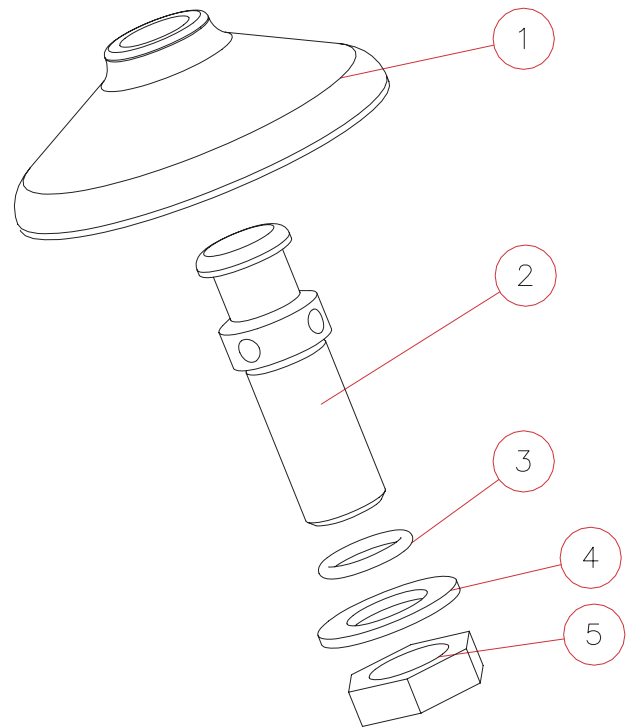
6. Attach air supply line to the stem.



# SILO FLUIDIZER SPARE PARTS



<u>Item</u>	<u>Part #</u>	<u>Description</u>
<b>Fluidizer Disks</b>		
1	4124	Blue Silicone Disk
	4124HT	Orange High Temp. Silicone Disk
	4134	White Silicone Disk
	4154	Black EPDM Disk
	4164	White EPDM Disk
<b>4300 Series</b>		
2	4310	Carbon Steel Stem
	4311	Aluminum Stem
	4312	Stainless Steel Stem
3	7561	O-Ring
	7561HT	High Temp O-Ring
4	4313	Flat Washer, Zinc Plated
	4314	Flat Washer, Stainless Steel
5	4315	1/2" Pipe Nut, Zinc Plated
	4316	1/2" Pipe Nut, Stainless Steel
<b>4400 Series</b>		
2	4410	Carbon Steel Stem
	4411	Aluminum Stem
	4412	Stainless Steel Stem
3	7755	O-Ring
	7755HT	High Temp O-Ring
4	4413	Flat Washer, Zinc Plated
	4414	Flat Washer, Stainless Steel
5	4415	3/4" Pipe Nut, Zinc Plated
	4416	3/4" Pipe Nut, Stainless Steel
<b>4500 Series</b>		
2	4510	Carbon Steel Stem
	4511	Aluminum Stem
	4512	Stainless Steel Stem
3	7714	O-Ring
	7714HT	High Temp O-Ring
4	4513	Flat Washer, Zinc Plated
	4514	Flat Washer, Stainless Steel
5	4515	1" Pipe Nut, Zinc Plated
	4516	1" Pipe Nut, Stainless Steel



**INSIST ON GENUINE  
SOLIMAR DISKS WITH  
THE TRADEMARKED  
RADIAL RIDGE DESIGN**

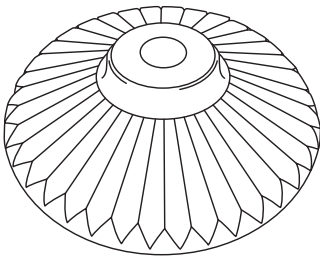
# PERIODIC MAINTENANCE SCHEDULE



Maintenance on Solimar Silo Fluidizers is minimal. However, periodic visual inspections should be made to check for wear.

The following inspection should be performed once a year:

1. Check for wear on the Fluidizer disk. Disk should seal tightly against the hopper wall. Check for uneven wear on the disk. If it is no longer round along the outside edge, this is a sign of uneven air flow and the disk should be replaced.
2. Check to make sure no product has "caked" or hardened beneath the disk. This can be cleaned by removing the disk and stem assembly. Also check to make sure the o-ring on the stem has not been crushed or flattened.
3. When reinstalling the Silo Fluidizer, be sure to tighten the nut to the recommended 25 ft. lbs (35 Nm) of torque



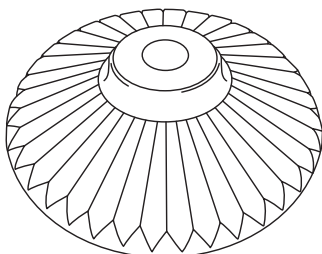
**INSIST ON GENUINE  
SOLIMAR DISKS WITH  
THE TRADEMARKED  
RADIAL RIDGE DESIGN**

# FLUIDIZER DISK SPECIFICATION/USAGE



	PART #	COMPOUND	COLOR	TEMPERATURE RANGE	FOOD GRADE APPROVED	USAGE CERTIFICATION
STANDARD	4124	Silicone	Blue	(-60 to 350)°F (-50 to 175)°C	Yes	FDA 177.2600
	4134	Silicone	White	(-60 to 350)°F (-50 to 175)°C	Yes	FDA 177.2600 USDA 3A *
	4154	EPDM	Black	(-20 to 250)°F (-30 to 120)°C	Yes	FDA 177.2600
	4164	EPDM	White	(-20 to 250)°F (-30 to 120)°C	Yes	FDA 177.2600
	4124HT	Silicone	Orange	(-50 to 450)°F (-45 to 230)°C	No	
	4124MD	Silicone	Gray	(-60 to 350)°F (-50 to 175)°C	Yes	FDA 177.2600 USDA 3A *
MINI	4824	Silicone	Blue	(-60 to 350)°F (-50 to 175)°C	Yes	FDA 177.2600
	4834	Silicone	White	(-60 to 350)°F (-50 to 175)°C	Yes	FDA 177.2600 USDA 3A *
	4824HT	Silicone	Orange	(-50 to 450)°F (-45 to 230)°C	No	
	4824MD	Silicone	Gray	(-60 to 350)°F (-50 to 175)°C	Yes	FDA 177.2600 USDA 3A *
	4854	EPDM	Black	(-20 to 250)°F (-30 to 120)°C	Yes	FDA 177.2600

\* USDA 3A compliance on disk only.



**INSIST ON GENUINE  
SOLIMAR DISKS WITH  
THE TRADEMARKED  
RADIAL RIDGE DESIGN**