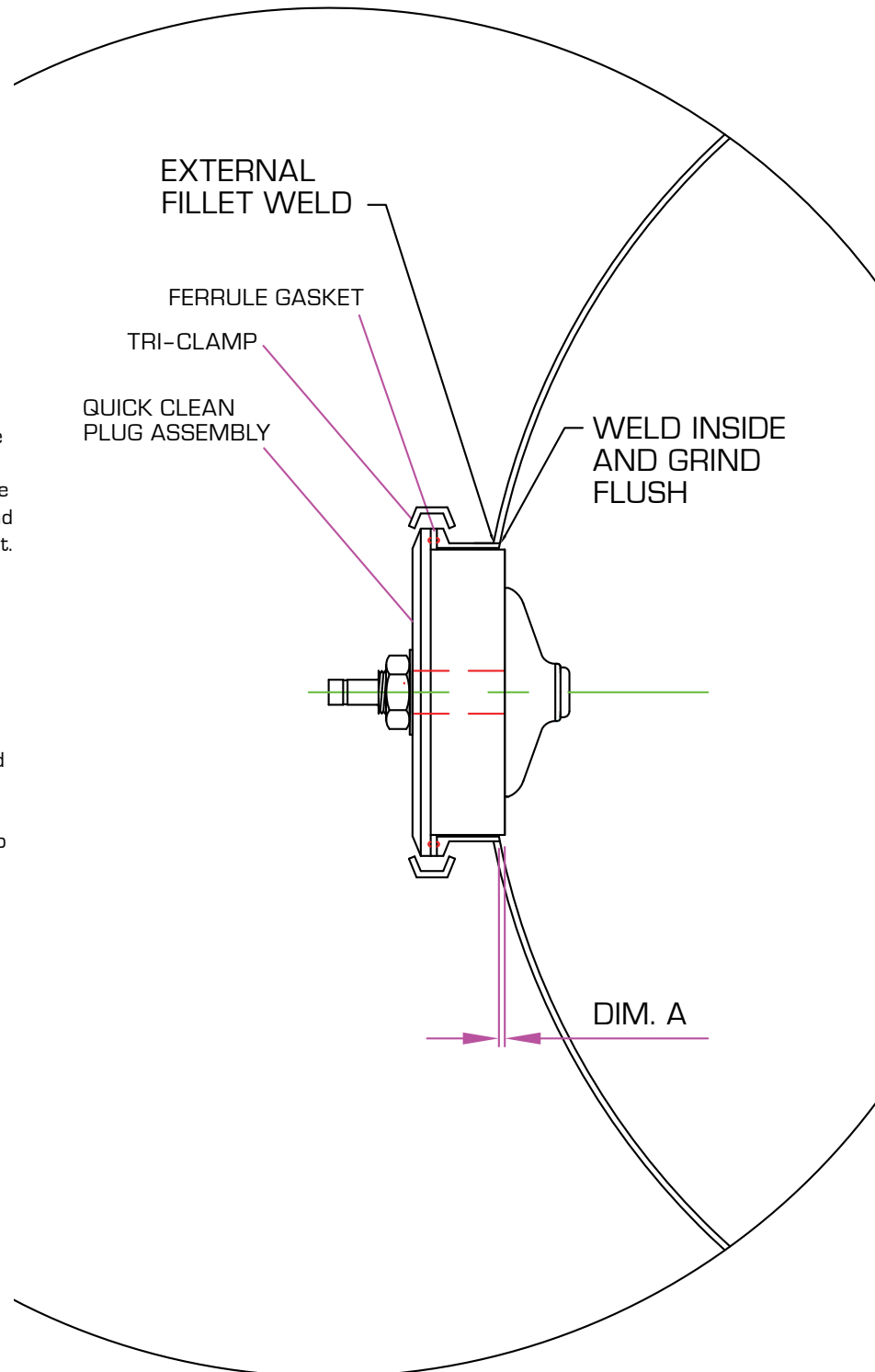


# SOLIMAR

Since 1985

## QUICK CLEAN INSTALLATION INSTRUCTIONS

- 1 The Solimar Quick Clean works in conjunction with a standard tri-clamp style ferrule, 6" x 1.5" for Standard Model 4220 and 3" x 1.5" for Mini Model 4230.
- 2 The ferrule should be trimmed with the contour of the vessel it is being placed in, with care being taken to make sure that in any conical placement, at least 1/8" of the plug should protrude into the vessel at the closest point on the wall. (See Dim. A)
- 3 The Stainless Steel Ferrule should be welded into place utilizing an external fillet weld and a flat weld between the inside surface of the tank and the inside edge of the ferrule. The internal weld should be ground smooth and treated to match the internal tank surface requirement.
- 4 Solimar fluidizer disk/ stem should be pre-installed on the plug to the recommended torque specification (of 25 lb ft or 35 N m).
- 5 A ferrule gasket (either 6" or 3") of required material (Buna, PTFE, Metal Detectable, etc.) should be installed over the plug to seal between the ferrule and the plug shoulder.
- 6 Once the plug is fully installed into the ferrule the clamp can be then be installed.
- 7 The Quick Clean Fluidizer stem design directly accepts a 1/2" Push-Lock style air fitting to eliminate threaded connections and reduce contamination areas.
- 8 Install all air plumbing according to recommendations provided by Solimar with your system.



Solimar Pneumatics | Minneapolis, MN 55432 USA | 1.800.233.7109 | P: 763.574.1820

F: 763.574.1822 | email: [solimar@solimarpne.com](mailto:solimar@solimarpne.com) | [www.solimarpneumatics.com](http://www.solimarpneumatics.com)

Solimar, Solimar-USA and the Radial Ridge Design are trademarks of Solimar Pneumatics. © 2014 Solimar Pneumatics. All Rights Reserved.